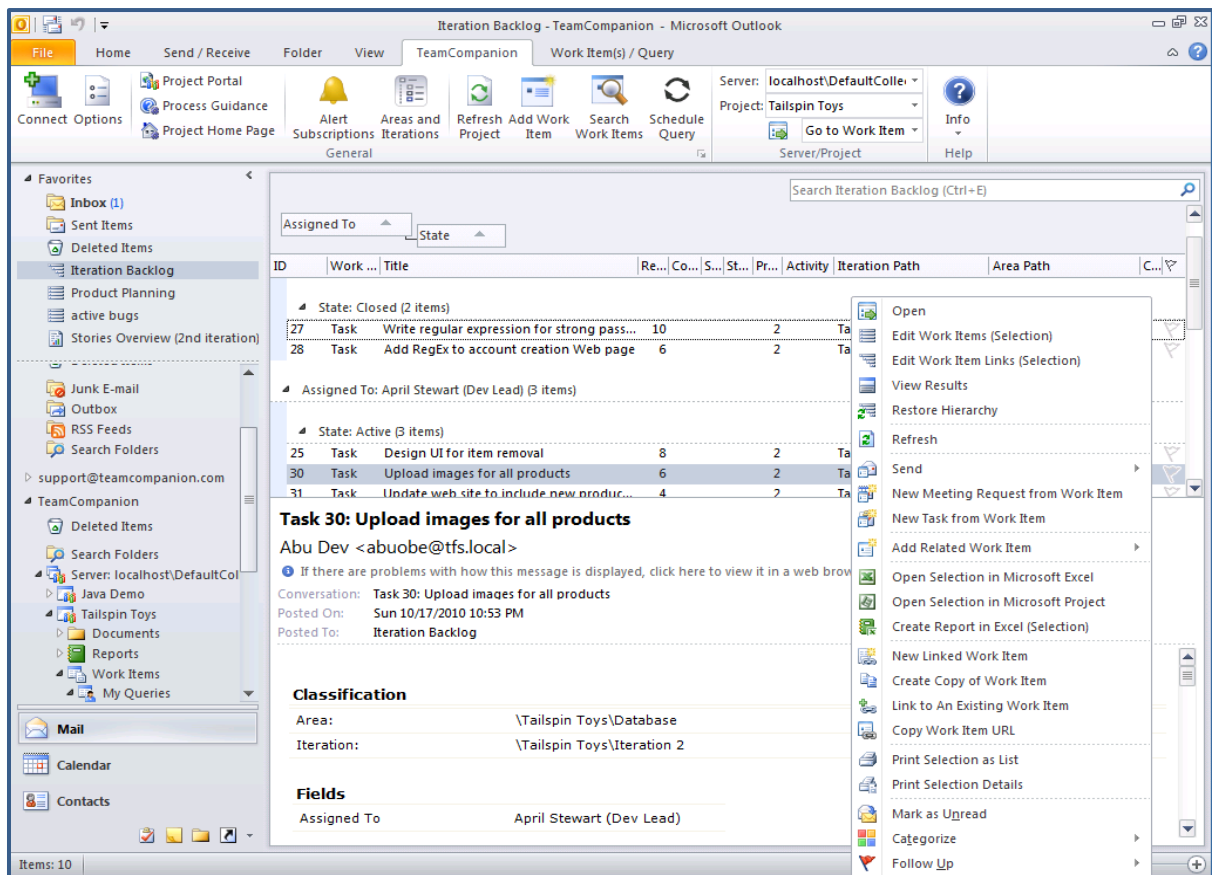




**TeamCompanion is a first class Microsoft Visual Studio Team Foundation Server (TFS) client within Office Outlook. In addition to the standard TFS client features, TeamCompanion leverages Outlook features providing unique capabilities that lead to better collaboration and communication among project stakeholders.**



### TeamCompanion key features include:

- Support for TFS 2010 and Outlook 2010
- Work with multiple TFS instances and multiple Team projects
- Work Item Management
  - View, edit and create work items and work item queries
  - Work item hierarchies
  - Offline support
    - Work Item access, grouping and search
    - Work Item editing\*
  - Scheduled Work Item queries
  - Powerful online and offline work item search including full-text search
- Agile Project Management Features\*
  - Backlog prioritization using drag and drop
  - Product and sprint backlog planning
- SharePoint integration (documents, project portal)
- SQL Server reports and Work Item query reports in Excel
- Outlook integration
  - Create Work Item from Email
  - Attach Email to Work Item
  - Create Email, Task or Meeting Request from Work Item
  - Work item Reminders, To-Do Bar view and Favorite Folders integration
- Integration with Excel and Project

## TeamCompanion & Outlook

One of the most popular e-mail clients today is Microsoft Outlook. TeamCompanion extends it and lets all project stakeholders (particularly business ones) take part in software development project using their favorite e-mail management tool. TeamCompanion combines Outlook artifacts such as e-mail, appointment or reminder with TFS artifacts like work items, work item queries, reports or builds.

### Common scenarios

*Create an e-mail from a work item including all work item attachments*

*Create a work item from an e-mail including all e-mail attachments*

*Work with work items in offline mode: access, edit\*, group and search work items*

*Use fulltext search or advanced search techniques to find work items*

*Immediately access important project information using preconfigured reports*

*Plan your sprints and prioritize project and sprint backlog using drag and drop\**

*Track project progress using scheduled work item queries*

„TeamCompanion brings even more 'team-ness' into Team System. By tying Outlook and Desktop Search with TFS, **TeamCompanion bridges the collaboration of stakeholder and development worlds.** It's a great idea.“

**Sam Guckenheimer**

*Group Product Planner, Visual Studio Product Line, Microsoft*

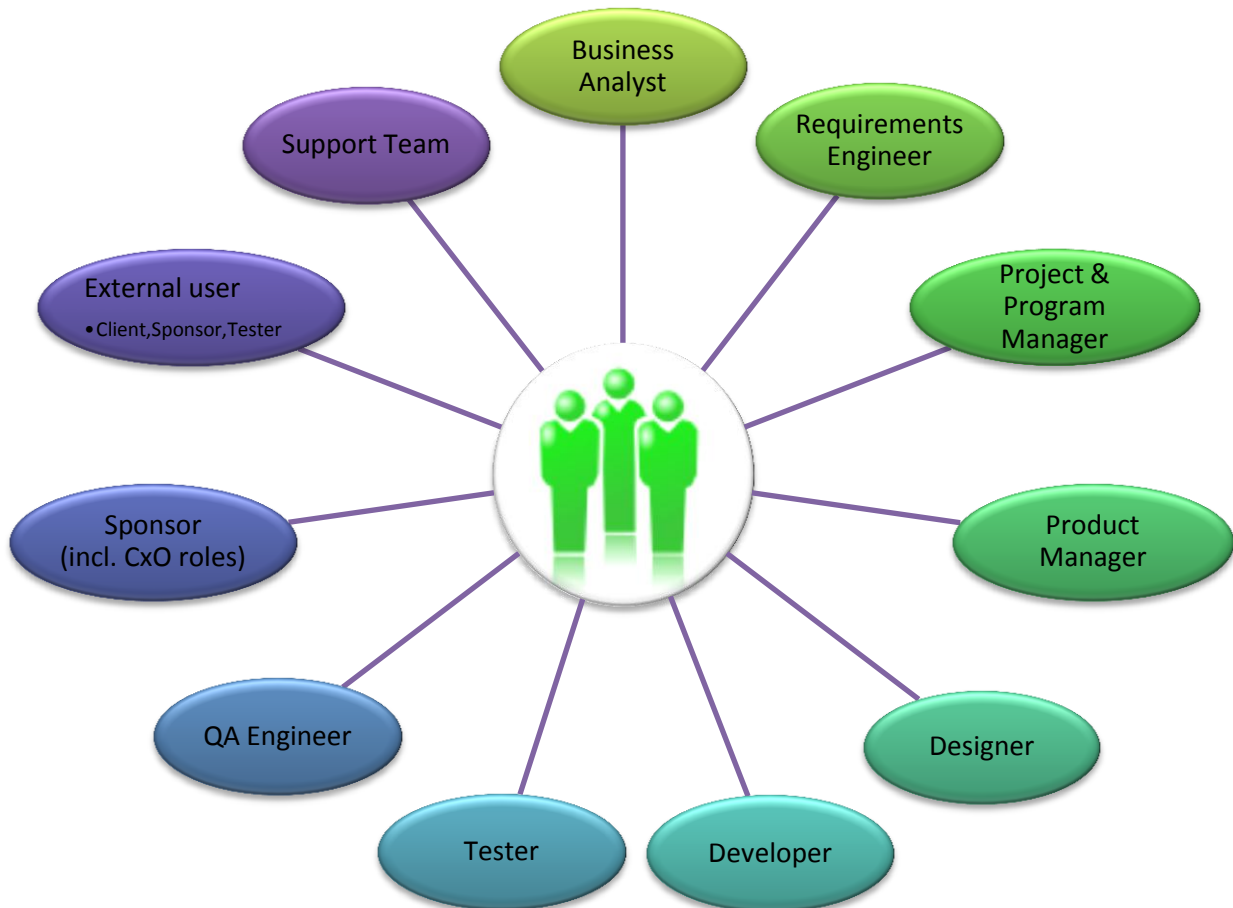
Author: Software Engineering with Microsoft Visual Studio Team System

## TeamCompanion users

Microsoft Visual Studio Team Foundation Server, along with other Microsoft server and client products (Project Server, Visual Studio, Office applications and other tools), covers all ALM areas, from the requirements management, application architecture up to the release management and IT support. **TeamCompanion, with its Outlook – TFS integration capability and the promise of taking collaboration between all software development project stakeholders to a new level, naturally fits into the Microsoft ALM solution offering.** Moreover, TeamCompanion is recommended for use by virtually all software development project stakeholders throughout all ALM areas.

*For example,* gathering requirements from business analysts or clients is easily done using TeamCompanion. Every e-mail consisting of new requirements can be, per mouse click within

Outlook, stored as a new work item by requirements engineer. CIO, as an executive sponsor, can regularly check the project progress using TFS reports within the TeamCompanion (and Outlook). Here is the list of all roles that benefit from using TeamCompanion.



*TeamCompanion user roles*

### Prerequisites

TeamCompanion installs on **Outlook 2003, 2007 and 2010.**

TeamCompanion works with **Visual Studio Team Foundation Server 2005, 2008 and 2010.**

### Comparison sheet

The best way to appreciate the breadth and depth of the TeamCompanion's feature set is to compare it to the standard TFS clients feature set. Standard clients include Visual Studio Team Explorer, Visual Studio Team Web Access and Office Excel and Project applications. On the following page you can find an excerpt from the comparison sheet available at [www.teamcompanion.com/blog](http://www.teamcompanion.com/blog).

Tasks	Team Explorer	Team Web Access & SharePoint Portal	TeamCompanion & Outlook	Office Excel & Project
Connect to a team project	Required	Required	<b>Required</b>	Required
<b>Access multiple TFS servers simultaneously</b>			<b>Yes</b>	
<b>Work offline, when you are disconnected from Team Foundation Server</b>			<b>Yes</b>	Yes
View process guidance and project portals (requires SharePoint Products)	Yes	Yes	<b>Yes</b>	
Access report site (requires SQL Server Reporting Services)	Yes	Yes	<b>Yes</b>	
Work with SharePoint document libraries	Yes	Yes	<b>Yes</b>	
Share documents and reports	Yes	Yes	<b>Yes</b>	
Set areas and iteration paths	Yes	Yes	<b>Yes</b>	Yes
Add, modify, copy and view work items	Yes	Yes	<b>Yes</b>	Yes
Group work items in lists			<b>Yes</b>	
Link work items, edit work item hierarchies and attach files to work items	Yes	Yes	<b>Yes</b>	Yes
<b>Attach to work items using drag and drop</b>	Yes		<b>Yes</b>	
Create work item lists and search work items	Yes	Yes	<b>Yes</b>	Yes
<b>Full text search for work items</b>	Online only. Searches in some fields only.	Online only. Searches in some fields only.	<b>Online and offline. Searches in all work item fields.</b>	
<b>Preconfigure reports for one click access</b>			<b>Yes</b>	
Share work items and work item queries	Yes	Yes	<b>Yes</b>	
Organize queries into folders and subfolders	Yes	Yes	<b>Yes</b>	
Restrict access to shared queries and query folders	Yes		<b>Yes</b>	
Export or import work items to or from Office Excel or Office Project	Export		<b>Export</b>	Import
Set alerts to notify you when changes are made to work items	Yes	Yes	<b>Yes</b>	
Generate reports from a work item query	Yes		<b>Yes</b>	Yes
<b>Manage backlog item priorities using drag and drop</b>			<b>Yes</b>	
Access version control	Yes	Yes	<b>Open changesets from notification mail</b>	
Access builds	Yes	Yes	<b>Open build from notification mail</b>	

\*Feature will be available in the new TeamCompanion version.